



# MADE IN CHINA

## Electrical Characteristics

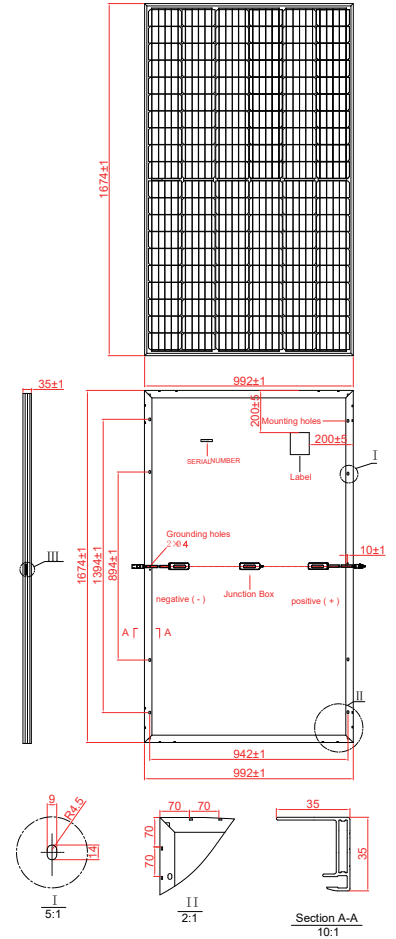
Module Type	SRP-310-BMB SRP-310-BMB-HV	SRP-315-BMB SRP-315-BMB-HV	SRP-320-BMB SRP-320-BMB-HV	SRP-325-BMB SRP-325-BMB-HV
	STC	STC	STC	STC
Maximum Power at STC (Pmp)	310	315	320	325
Open Circuit Voltage (Voc)	39.8	40.1	40.4	40.6
Short Circuit Current (Isc)	9.77	9.85	9.93	10.02
Maximum Power Voltage (Vmp)	33.5	33.7	34.0	34.2
Maximum Power Current (Imp)	9.26	9.35	9.42	9.51
Module Efficiency at STC(ηm)	18.67	18.97	19.27	19.57
Power Tolerance	(0,+4.99)			
Maximum System Voltage	1000 VDC / 1500 VDC			
Maximum Series Fuse Rating	20A			

STC: Irradiance 1000 W/m<sup>2</sup> module temperature 25°C AM=1.5 .

Power measurement tolerance: +/-3%; Voltage measurement tolerance: +/-2%; Current measurement tolerance: +/-4%

## Temperature Characteristics

Pmax Temperature Coefficient	-0.38 %/°C
Voc Temperature Coefficient	-0.28 %/°C
Isc Temperature Coefficient	+0.05 %/°C
Operating Temperature	-40 ~ +85 °C
Nominal Operating Cell Temperature (NOCT)	45±2 °C



## Mechanical Specifications

External Dimensions	1674 x 992 x 35 mm
Weight	18.5 kg
Solar Cells	Mono crystalline 156.75 x 78.375mm (120pcs)
Front Glass	3.2 mm AR coating tempered glass, low iron
Frame	Anodized aluminium alloy
Junction Box	IP68, 3 diodes
Output Cables	4.0 mm <sup>2</sup> , Portrait:255mm(+)/355mm(-);Landscape:1200mm
Connector	TT02&PV-KST4xy-UR;PV-KBT4/xy-UR for SD-903
Mechanical Load	5400 Pa

## Packing Configuration

	1674 x 992 x 35 mm		
Container	20'GP	40'GP	40'HQ
Pieces per Pallet	30	30	30+2*
Pallets per Container	12	26	26
Pieces per Container	360	780	832

\* 30+2 pieces per pallet is the special package which only suits for container transport. For details, please consult SERAPHIM.

## I-V Curve

